



KIT PART NUMBER 3280025
INSTRUCTIONS FOR INSTALLING AN ADD-ON RAMP TO A COLD DRINK CENTER

CHECK THE PARTS RECEIVED IN THE KIT WITH THE PARTS LIST IN THESE INSTRUCTIONS. IF ANY PARTS ARE MISSING, CONTACT THE NATIONAL VENDORS PARTS DEPARTMENT IMMEDIATELY.

**Read these instructions carefully before installing the kit.
Keep these instructions for part numbers and for future reference.**

This kit contains the following :

PART NUMBER	DESCRIPTION	QUANTITY
3280026	INSTRUCTIONS	1
3283136	ADJUSTMENT ASSEMBLY - CUP RAMP	1
3283137	WELDMENT - ADJUSTABLE CUP RAMP	1
3103133	WING NUT - #8-32 - STAINLESS	2
3108221	SCREW - #8-32 X 3/8 PHS ST STL	1
4402043	NUT - #8-32 W/L.W. - S.S.	1
6114121	WASHER - ROLLER	1

The purpose of the kit is to provide a means to accelerate cups and orient them properly at the beginning of the drop to eliminate cup stalls. The design of the add-on ramp builds in flexibility by having the adjustability to tailor the installation to specific situations.

1. Remove left hand deflector (3283120) from the left hand cup chute.
2. Install the add-on ramp as shown in the figure. Remove the protective tape from the add-on ramp, and apply a cleaner to remove the adhesive residue on this surface.

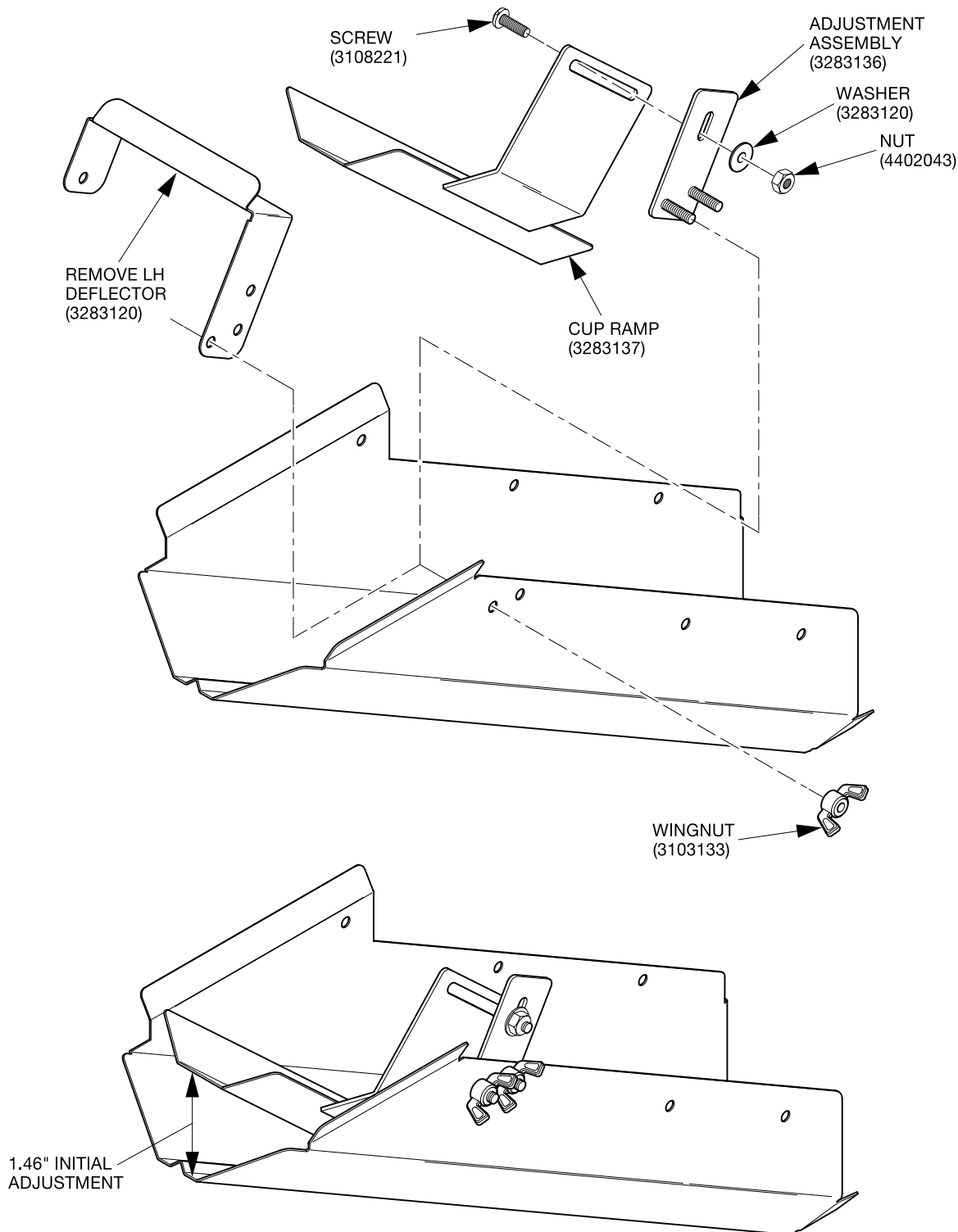
NOTE

The position shown performed well for a variety of cups that were tested at the factory.

3. If the left hand cup mechanism is not set to the fast release mode, change it to this setting.
4. Drop a few cups and observe where the cups are striking the add-on ramp. If the cups are not striking the add-on ramp about 2" from the end, adjust its position accordingly.
5. Run a cup test dropping at least twenty (20) cups down the ramp and observe the results.



-
6. The original setting is satisfactory if:
 - Cups vend smoothly with little or no hesitation
 - Cups do not bounce
 - No cup drop failures occur
 7. If the cups hesitate when turning and/or barely traverse the length of the chute, **increase** the angle of the add-on ramp in about 5 degree increments until satisfactory cup drops occur.
 8. If the cups bounce or are out of control going down the chute, **decrease** the angle of the add-on ramp in about 5 degree increments until satisfactory cup drops occur.
 9. If a few cups still slide down the chute backwards, install the left hand deflector (3283120) in the next set of holes down the chute.



327p0024